

RECOMMENDED VACCINE MONITORING LOGGER



UTREL30-16

30 Day Low Temperature Logger with Display

LogTag Recorders

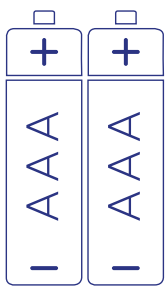


The LogTag® UTREL30-16 Temperature Recorder measures and stores up to 16,000 temperature readings.

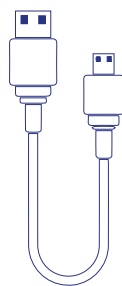
It features a large easy-to-read display and is designed to show 'at a glance' if temperature excursions have occurred during the current day and up to the previous 29 days.

The alarm is triggered if temperature readings are outside pre-set alarm limits which is indicated by a large X on the display and, if configured, the audible alarm will sound.

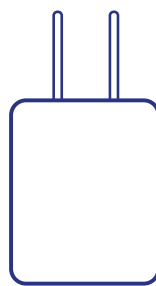
Accessories



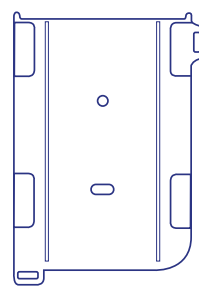
2x AAA Batteries
Not Included



USB Cable
Included



AC Adapter
Not Included



Wall Mount
Not Included



Buffer assembly
Not Included



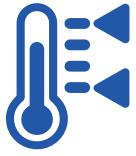
External Probe
Not Included (Required).

ST10S Probes are available with a 0.5m, 1.5m or 3m cable
ST10M Probes are available with a 1.5m or 3m cable.
E.g. ST10M-15 for 1.5m or ST10M-30 for 3m cable.

Compatible probes below:

ST10S	22mm tip length, ø5mm (Not recommended for use with buffer)
ST10M	65mm tip length, ø5mm.
STX50	5 Meter extension cable for ST10/ST100 sensors.

Features



Read current temperature and latest Min-Max temperature at a glance.



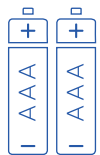
Download data via LogTag Analyzer or as a PDF (no software required).



Audible alarm and flashing red LED signals a temperature alarm.



Check and reset Min-Max temperature reading at any time.



Can be powered by 2x AAA batteries (user replaceable) if not external powered.



View alarm status for up to 30 days at a glance.



Auto-pause function suspends alarm & statistic processing when the external probe is unplugged.



Measure and store up to 16,000 readings – enough for 67 days at 6 minute logging.



Second battery backup via a coin cell to ensure no data is lost.



Inspections can be recorded at the push of a button.

Applications



Vaccine & Pharmaceuticals



Industrial



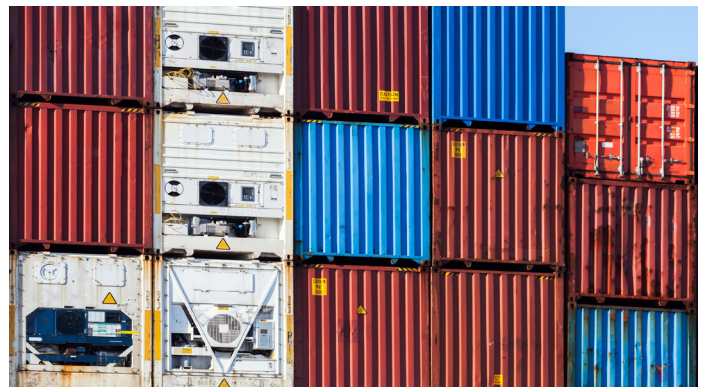
Cold Room



Clinic



Transportation



Refrigerated Containers

Specifications

Product Model	UTREL30-16.
External Sensor Measurement Range	-90°C to +40°C (-130°F to +104°F).
Operating Temperature Range	-30°C to +60°C (-22°F to +140°F).
Storage Temperature Range	0°C to +40°C (32°F to +104°F).
Rated Temperature Reading Resolution	0.1°C (0.2°F) for measurements -80°C to 10°C (-112°F to 50°F) 0.2°C (0.4°F) for measurements 10°C to 20°C (50°F to 68°F) and -90°C to -80°C (-130°F to -112°F) 0.3°C (0.5°F) for measurements 20°C to 30°C (68°F to 86°F) 0.5°C (0.9°F) for measurements 30°C to 40°C (86°F to 104°F) LogTag Analyzer® currently displays to one decimal place of °C or °F. The native resolution is what is stored in the LogTag®.
Sensor Reaction Time	Typically less than 2 minutes(T90) in moving air (1m/s) for ST10S type
Rated Temperature Reading Accuracy	Better than ±0.5°C for -20°C to +10°C (-4°F to 50°F) Better than ±0.7°C for -50°C to -20°C (-58°F to -4°F) and +10°C to +30°C (50°F to 86°F) Better than ±1°C for -80°C to -50°C (-112°F to -58°F) and +30°C to +40°C (86°F to 104°F) Better than ±1.8°C for -90°C to -80°C (-130°F to -112°F)
Recording Capacity	16,129 temperature readings. 67 days at 6 minute logging. Day summary statistics memory (for display on LCD); up to 30 days of Min/Max/duration and alarm trigger statistics.
Sampling Interval	Configurable from 30 seconds to 18 hours.
Logging Start Options	Push button start (with configurable start delay from 1 minute to 72 hours) or specific date & time.
Download Time	Typically with full memory (16,129 readings) in less than 10 seconds.
Environmental	IP51 (when vertically mounted or hung with USB dust-cap in place).
Power Source	5V via micro USB socket or 2 x 1.5V AAA batteries. CR2032 LiMnO2 coin cell (backup logging function only).
Battery Life	AAA battery up to 12 months - if unit is operated without power supply.
Real Time Clock	Built-in real time clock. Rated accuracy ±25ppm @ 25°C (equivalent to 2.5 seconds/day). Rated temperature coefficient is -0.034 ±0.006ppm/°C (i.e typically +/- 0.00294 seconds/day/°C).
Standard Remote Probe Cable Lengths	Standard: 1.5m (4'11"). Extended: 3m (9'10") (recommended maximum).
Remote Sensor Cable Type	PTFE (FDA food contact rated) coaxial.
Connection Interface	USB 2.0 / Micro USB Socket.
Size	141mm(H) x 72mm(W) x 18mm(T).
Weight	156g with AAA batteries, (132g - excluding probe and AAA batteries).
Case Material	Polycarbonate.

